

Annual Evaluation

Program Highlights

2023-2024





CONTENTS

- I. ABOUT SAN FRANCISCO SAFE ROUTES TO SCHOOL.....4
- II. ABOUT THIS REPORT7
- III. BY THE NUMBERS 10
- IV. PROGRAM HIGHLIGHTS..... 13
 - A. Annual Events 14
 - B. Activity 18
- V. COMMUNITY OUTREACH AND ENGAGEMENT.....28
- VI. COMMITMENT TO EQUITY 30
- VII. INFRASTRUCTURE COLLABORATION..... 34
- VIII. CREATING LASTING IMPACT 36
 - A. Goal 1: Mode Shift.....36
 - B. Goal 2: Safety/Reducing School-Related Collisions.....40
 - C. Other Signs of Change41
- IX. LOOKING AHEAD TO 2024–2025 42
 - A. Top 5 Lessons Learned from 2023–2024.....42
 - B. Looking Forward/Coming Up in 2024–2025.....44

“Kids want to be outside. They want to be active. They want to be biking, walking. And [this program is about] really cultivating that and helping make sure that they can be safe on the way to school.”



-Kenny Kruse,
SF Safe Routes to School
Program Manager



Letter of Introduction



Dear San Francisco Safe Routes to School Supporters,

I am pleased to present this year's Safe Routes to School annual report, highlighting the significant strides we have made in ensuring the safety and well-being of San Francisco students. The SFMTA's dedication to providing safe, active, and shared transportation options is yielding remarkable results, and there is much to celebrate.

Notably, we have already achieved our 2030 goal of reducing school-related traffic collisions by half! Furthermore, we are incredibly proud to report zero fatal school-related collisions in the past two school years.

These achievements are a direct result of our multifaceted approach to street safety, which includes:

- Traffic calming measures: Implementing improvements near school campuses to reduce speeds and enhance pedestrian and cyclist visibility.
- Enhanced walkability and bikeability: Creating a city where walking and biking are safe and enjoyable for youth and families, exemplified by the transformation of JFK Promenade into a permanently car-free space. This vibrant space now serves as a route for students in our Safe Routes to School bicycle PE classes to learn and practice their riding skills.

- Robust public transportation: More San Francisco students than ever are utilizing Muni for their school commute. Our investments in Muni have resulted in a fast, frequent, reliable, clean, and safe system. Coupled with our Free Muni for All Youth initiative, students are embracing public transit at rates comparable to pre-pandemic levels.

Looking ahead, we are excited to share the progress on the SFMTA's Biking and Rolling Plan, which includes proposed School Streets designed to prioritize safety and encourage active transportation around schools. We have also established a new Schools Coordinator position to further strengthen collaboration between the SFMTA and the San Francisco Unified School District, ensuring that we effectively and efficiently address student transportation needs.

The accomplishments detailed in this report are a testament to the SFMTA's commitment to creating a safe and thriving environment for all. The San Francisco Safe Routes to School program is not only about immediate safety but also about cultivating a lifelong appreciation for active transportation and sustainable practices. We envision a future where today's students become tomorrow's champions of walking, biking, and public transit, leading the way to a brighter, healthier, and safer city for all.

Sincerely,

Jeffrey P. Tumlin
Director of Transportation



I. About San Francisco Safe Routes to School



San Francisco Safe Routes to School strives to make active and shared modes of transportation —called the **Four Fun Ways**—fun, safe, and accessible for all youth and families across San Francisco.

The program promotes positive behavior change by providing school communities with the resources, skills, and experiences they need to safely and confidently walk, bike, carpool, and take Muni or other forms of transit to and from school.

FOUR FUN WAYS

The Sustainable Modes of Transportation
San Francisco Safe Routes to School Promotes:



Biking



Transit



Walking



Carpool

I. About San Francisco Safe Routes to School

San Francisco Safe Routes to School is a transportation education and encouragement program serving school-age children, families, and communities across San Francisco.

Since 2019, the San Francisco Safe Routes to School program has been led by the San Francisco Municipal Transportation Agency (SFMTA) working closely with the San Francisco Unified School District (SFUSD) and local nonprofit organizations. The program consists of a broad range of education, encouragement, and experiential events and activities that promote use of the Four Fun Ways as alternatives to single-family-vehicle use. San Francisco Safe Routes to School is proud to be a collaborative, community-driven initiative; each of the program's events is designed and offered based on the requests and needs of students, families, and schools, with a special focus on ensuring equity and access in parts of the city that bear disproportionate safety and financial burdens.

The San Francisco Safe Routes to School Program Team:

San Francisco Safe Routes to School is led by the SFMTA, and elements of the program are implemented or supported by the following city agencies and contractors:

- San Francisco Unified School District (SFUSD)
- San Francisco Bicycle Coalition (SFBC)
- Walk San Francisco (Walk SF)
- San Francisco Transit Riders
- YBike San Francisco
- Cause IMPACTS
- Contigo Communications



Overarching Goals of the San Francisco Safe Routes to School Program. By 2030, the program will:

GOAL
1

Mode Shift.

Reduce single-family-vehicle trips from 48% in 2018 to 30%.

GOAL
2

Safety.

Reduce school-related collisions by 50% from an annual average of 2 severe and 32 total-injury collisions.

I. About San Francisco Safe Routes to School

The “Why” Behind San Francisco Safe Routes to School

All youth deserve to feel safe and protected as they move through the city, especially on their commutes to and from school. To this end, the ultimate goals of the San Francisco Safe Routes to School program are to reduce the number of school trips made in single-family vehicles by promoting the use of active and shared modes of transport (Goal 1) and to reduce the number of school-related vehicle collisions, injuries, and deaths (Goal 2).

The program produces a number of positive effects for local communities, including minimizing traffic congestion and traffic-related injuries, improving local environmental conditions and air quality, enhancing the overall health and well-being of children and communities, increasing students' academic performance, and reducing truancy.

The San Francisco Safe Routes to School program is transforming the ways youth and communities move through the city. By providing exposure, education, and opportunities for students and communities to directly engage in shared and active forms to travel, San Francisco Safe Routes to School is helping to inspire long-term behavior change that advances the program's overarching goals while promoting healthier lifestyles and a more sustainable future for all.



Impacts and Benefits

of the Safe Routes to School Program

As use of the Four Fun Ways increases, communities experience the following positive impacts:



Less traffic congestion



Better academic outcomes for students



Safer streets with fewer collisions



More active lifestyle habits, which leads to better overall community health



Cleaner air and fewer carbon emissions

II. About this Report

This report provides an overview of the outcomes and impact of the San Francisco Safe Routes to School program during the 2023–2024 school year. It also includes reflections on lessons learned over the course of the year, which can be used to learn, grow, and continuously improve the program for the future.

The 2023–2024 school year marked a significant turning point for San Francisco Safe Routes to School, and this report establishes a crucial baseline for evaluating program performance in the post-pandemic era. This year, the program successfully returned to hosting all activities and events in person, restoring an essential component that was greatly missed during the years of the COVID-19 pandemic. San Francisco Safe Routes to School also implemented a new program structure that shifted administrative, operational, and implementation roles and strategies. Additionally, introducing a new evaluation framework and data management system enhanced the program's ability to track and measure its performance and impact in real time.

While there is still much work to do, it is exciting to share the San Francisco Safe Routes to School program's progress and celebrate successes from the 2023–2024 school year.



II. About this Report

Evaluation Framework

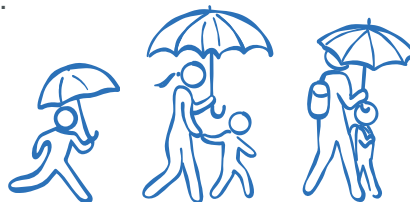
Ongoing monitoring and evaluation enable the San Francisco Safe Routes to School program to track program outcomes and understand progress toward achieving key mode shift and safety goals. Building upon lessons learned from past evaluations and best practices from other Safe Routes to School programs across the country—including Alameda County, Marin County, and San Jose—San Francisco Safe Routes to School embraced a new data management system and evaluation framework this year. These developments demonstrate the program’s commitment to continuous improvement and a data-driven approach.

The evaluation framework outlines the key stages of behavior change as: (1) increasing individuals’ awareness and perception of San Francisco Safe Routes to School and the Four Fun Ways, (2) increasing access to safe and active modes of transport, and (3) helping program participants actually engage in active use of these modes. These key stages contribute to creating lasting change for youth and communities. The framework also intentionally places equity and inclusion—a core value of the program—at the center, signifying San Francisco Safe Routes to School’s deep and enduring commitment to prioritizing the needs of students and school communities bearing disproportionate transportation safety and financial burdens. Key findings for each part of the evaluation framework are shared throughout the report, nested within the sections outlined in Table 1.



TABLE 1.

Framework Component	Section of Report
Increase Awareness and Perception	V. Community Outreach and Engagement
Increase Access and Engage in Active Use	IV. Program Highlights
Create Change	VII. Create Lasting Impact
Equity and Inclusion	VI. Commitment to Equity



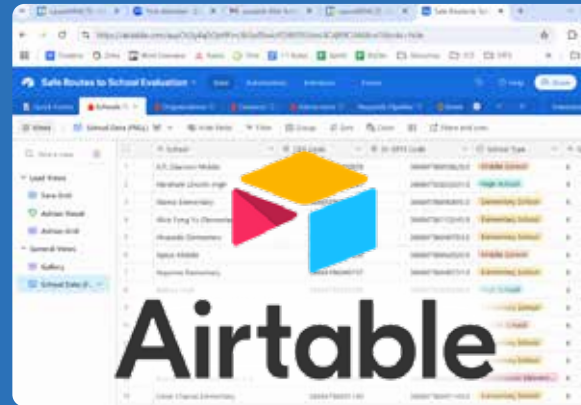
Data and Methodology

To measure program impact, the San Francisco Safe Routes to School program collected data over the course of the school year from key stakeholders, including school administrators, parents and caregivers, teachers and other school staff, community members, and students. The program also implemented new internal data collection and reporting systems to enhance the quality and consistency of data collected by the San Francisco Safe Routes to School program team. Key primary data sources for information presented throughout this report include:

- **School Administrator Surveys**
- **Bike & Roll Champions Survey**
- **Bike P.E. Student Surveys**
- **School Travel Tallies**
- **Program Team Post-Event Reports**
- **Website and Social Media Analytics**

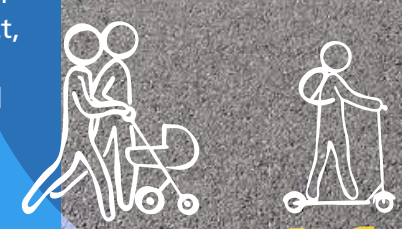
While every effort has been made to capture complete and accurate data, there may be gaps in the data from the current school year due to the fact that new systems and processes were introduced and refined throughout the year. Because of this, the figures in this report likely under-represent the true reach and impact of the San Francisco Safe Routes to School program. Regardless, the data provides a valuable baseline for understanding program reach and impact.

A New Age of Data:



Good data is central to any evaluation process. This year, San Francisco Safe Routes to School implemented a new centralized data management system, created using AirTable, to support more-streamlined and consistent data collection across the program. Having a centralized and easy-to-use system has enabled the San Francisco Safe Routes to School team—comprised of various nonprofits and agencies across the city—to collaborate with greater efficiency and transparency. By providing Customer Relationship Management (CRM) functionality, the new database has also enabled the program team to more easily track and understand the level of engagement with individual schools and even within each school.

Despite being in the first year of implementation, San Francisco Safe Routes to School's new data system has already received national recognition as a model for other Safe Routes to School programs across the country. In fact, San Francisco Safe Routes to School leadership has been invited to share more about the system as part of a panel on data best practices during the 2024 Safe Routes to School National Conference in October!



III. By the Numbers



155 Events

Total San Francisco Safe Routes to School events held during the 2023-2024 school year including community outreach events, events hosted during annual celebrations, and other events and activities organized at local schools.



21 Community Outreach Events



55 Events Hosted During Annual Celebrations

Annual celebrations include Transit Month, Walk & Roll to School Week, and Bike & Roll to School Week.



79 Additional Program Events & Activities

- 22 Bike P.E.
 - 18 Bike Blenders
 - 17 Walking School Buses
 - 11 Learn to Ride Events
 - 4 Biking with Children Workshops
 - 1 Muni Field Trip
 - 6 Other Bike-Ride Events
- Family Rides, Bike Trains, and Drop-In Bike-Practice Sessions*



Over 10,000 Total Participants

10,799 community members of all ages engaged in San Francisco Safe Routes to School events during the 2023-2024 school year.

7,683 Student Participants

3,116 Adult Participants
Including parents and caregivers, teachers and other school staff, and other adults from the community





2,580+ Miles Traveled Using the Four Fun Ways.

Program participants traveled 2,588.5 miles during various walking, biking, and rolling events over the course of the school year!



2,491.2 Miles Biked

This is equivalent to biking around the city of San Francisco over 80 times.



97.3 Miles Walked

This is equivalent to walking the length of the Golden Gate Bridge 57 times.



56.2% of Events Included Translation

Over half of San Francisco Safe Routes to School events featured some form of written or spoken translation in a language other than English. Translation was available in up to seven different languages, including Spanish, Arabic, Chinese, Japanese, Filipino (Pilipino or Tagalog), Vietnamese, and Samoan.



755 Pieces of Safety Gear Distributed

Including helmets, bike lights, safety vests, and other gear to help keep kids safe on the road. Safety gear and other incentives are distributed during events as rewards for participation and to ensure all students and families have access to the resources they need to bike, walk, carpool, and use transit safely.

"A few families went out of their way to participate when they normally drive, and those families had a wonderful experience changing up their routine for a day. Lots of biking families discovered each other and made plans for future rides together. It was a great day for community building."

-Parent at SF Day



120+

San Francisco Schools Engaged

San Francisco Safe Routes to School events served 84 public, non-charter SFUSD schools.

This means that events were either hosted by a given school or included participating students from that school. Over 40 additional non-SFUSD schools also engaged in programming, including preschools, private schools, independent, and charter schools.



81.6% of SFUSD Schools Engaged

84 of SFUSD's 103 K-12 public, non-charter schools were engaged in programming in 2023-2024.

- 58 Elementary Schools
- 11 Middle Schools
- 9 High Schools
- 6 Other Schools

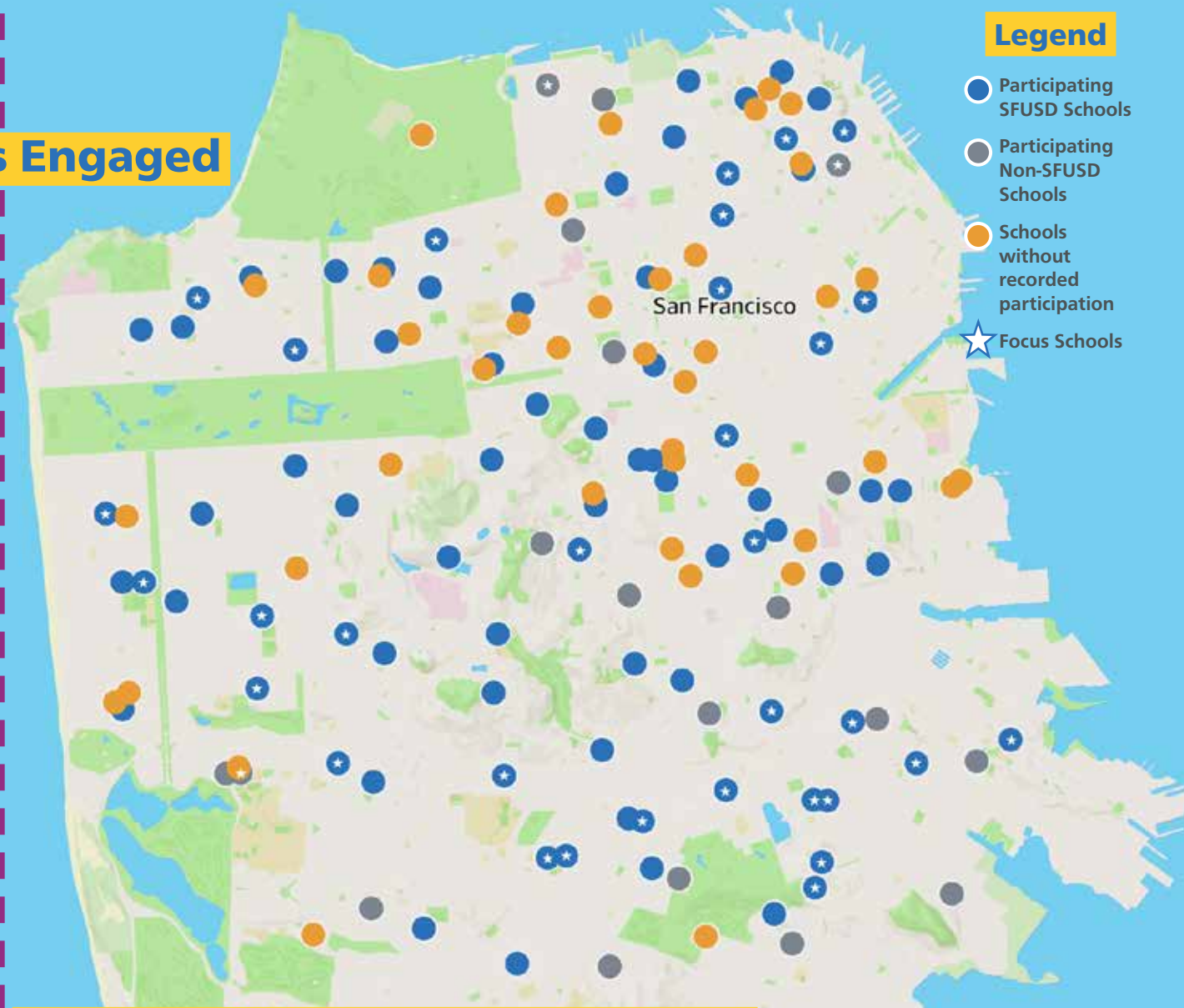
(combination, alternative, etc.)



93.9% of Focus Schools Engaged

31 of the program's 33 Focus Schools were engaged via San Francisco Safe Routes to School programming in 2023-2024. Focus Schools are a set of SFUSD schools that are prioritized for program delivery and resource allocation.

(These schools were identified based on traffic collision data and student demographics in order to address long-standing inequities across the city.)



2023-2024 Program Impact Map

The San Francisco Safe Routes to School program reaches schools in every part of the city. The program primarily serves public, non-charter, K-12 schools in SFUSD, though some events are also open to non-SFUSD schools. During the 2023-2024 school

year, 84 SFUSD schools, including 31 Focus Schools, engaged in at least one SF Safe Routes to School event. Additionally, over 40 non-SFUSD schools, including preschools, private schools, independent, and charter schools, also participated in citywide events.

IV. Program Highlights

Each year, San Francisco Safe Routes to School hosts a broad range of education and encouragement events and activities to motivate youth, families, and communities to walk, bike, roll, carpool, and take public transit to school.

These events, which include three large-scale annual events as well as ongoing activities and programs throughout the year, help participants understand which transportation options are available and provide the resources needed to safely access and use those modes. By providing opportunities to experience the Four Fun Ways firsthand, they also help build participants' skills and confidence in their ability to travel using modes that may be new or unfamiliar.



Overarching Benefits

of San Francisco Safe Routes to School Events and Activities:



Firsthand Experience → Engaging in active use of the Four Fun Ways helps participants build skills, familiarity, and confidence so they might use them again in the future.



Safety in Numbers → There is safety in numbers, and traveling in groups during San Francisco Safe Routes to School events and activities keeps youth protected on the city's busy streets.



Decreasing Truancy → By providing safe and structured ways to get to school, Safe Routes to School events and activities help students get to school on time, reducing truancy.



Sense of Community → The program unites school communities by providing opportunities for students, families, school staff, and other individuals to come together and build familiarity.



Forming Healthy Habits → By promoting forms of travel that encourage students to move their bodies and be physically active (walking, biking, etc.), the program helps keep students healthy and form good habits that will sustain a healthy life.



Combating Climate Change → By reducing the number of single-family vehicles on the road, the Safe Routes to School program reduces carbon emissions and helps improve air quality and environmental conditions in neighborhoods and around schools.

IV. Program Highlights: Annual Events

Annual events are large-scale events that happen simultaneously throughout different parts of the city.

Each year, San Francisco Safe Routes to School hosts three key annual events: Transit Month, Walk & Roll to School Week, and Bike & Roll to School Week. These citywide events are San Francisco Safe Routes to School's biggest events of the year and help build momentum and excitement around the Four Fun Ways. They are a great entry point for schools across the city to engage with the San Francisco Safe Routes to School program.

Transit Month

San Francisco Safe Routes to School's Transit Month coincides with a citywide Transit Month celebration each September. During Transit Month, the program focuses on encouraging students and families to utilize Muni and other forms of local transit to commute to school. It also raises awareness about available transit-access programs and resources available to school communities, such as SFMTA's Free Muni for All Youth program. This initiative grants all youth 18 years and younger, regardless of household income level and residency, free access to public transportation in the city of San Francisco.

Transit Month by the Numbers:



7 Schools
Participated

Schools represented:

- Alice Fong Yu Alternative School
- A.P. Giannini Middle School
- Francisco Middle School
- George Washington High School
- Herbert Hoover Middle School
- Independence High School
- The Academy-SF @ McAteer

TRANSIT MONTH SEPTEMBER 2023

Get there safely

Llegar allí de forma segura 一路平安

Pumunta doon nang ligtas

هه لى لى لوصول

This year, San Francisco Safe Routes to School's main event during Transit Month was hosting a Transit Month Trivia Contest.

29 SFUSD middle and high school students from across the city participated to test their San Francisco transit knowledge!

*Win Prizes! ¡Gana Premios! 贏獎品!
Manalo ng mga Premyo! زى اوج حبري*



» Walk & Roll to School Week

Many San Francisco students walked, biked, and rolled to school the week of October 2–6, 2023, as part of Walk & Roll to School Week. This annual, internationally celebrated event encourages students, families, and the school community to walk and roll to school. The initiative also provides students with an opportunity to learn about and practice safe walking habits, such as how to use a crosswalk. Since Walk & Roll to School Week happens early in the school year, it represents a great opportunity for the San Francisco Safe Routes to School program team to engage with school administrators, teachers, and community champions, building relationships and momentum for ongoing engagement throughout the year.

This year's Walk & Roll to School Week included events at six SFUSD schools. It also featured a special media event highlighting Jean Parker Elementary School, a Focus School located in Chinatown. Jean Parker has a long history of encouraging alternative modes to get to school and is an inspiration for other SFUSD schools. For the past nine years, school staff have organized monthly walking meetups, helping to inspire and support students to build new habits.¹

During Walk & Roll to School Week, Safe Routes to School partnered with Jean Parker to host a Walking School Bus and organize a Golden Sneaker Contest, which rewards the classroom with the most student walkers. The celebratory day also included pastries from a local Chinese bakery, lactose-free milk, and green tea to ensure that all offerings reflected and honored the local community's cultural preferences and dietary needs.

Walk & Roll to School Week by the Numbers:

 **100+** Students

 **6** Schools

Schools Represented:

- Argonne Elementary
- Cleveland Elementary
- Dolores Huerta Elementary
- Edward R. Taylor Elementary
- Jean Parker Elementary
- Tenderloin Community Elementary



IV. Program Highlights: Annual Events

» Bike & Roll to School Week

Bike & Roll to School Week (April 29–May 3, 2024) is an annual springtime event that celebrates fun and healthy ways to commute to school. This is San Francisco Safe Routes to School’s biggest event of the year, with thousands of students, parents and caregivers, teachers and school staff, and community members participating in the celebration. Anyone with wheels, whether they are on bikes, scooters, skateboards, wheelchairs, roller skates, or strollers, can participate; walkers are welcome, too. The event brings together biking enthusiasts at each school and fosters a sense of unparalleled excitement and community among participants.

This year, 50 schools across the city hosted events during Bike & Roll to School Week. The most common events were Bike Trains, or community bike rides that bring together students and caregivers for fun rides to school. There was also a citywide Art Contest that invited students of all ages to submit their favorite depictions of safe and active modes of transport. Snippets of students’ artwork are featured throughout the pages of this report. Additionally, the week featured a special media highlight event at Dolores Huerta Elementary School, located in the Noe Valley neighborhood; Supervisor Raphael Mandelman (San Francisco Board of Supervisors, District 8) and SFMTA Director of Transportation Jeff Tumlin attended this event, signifying the importance of Bike & Roll to School Week to the city at large.



Having events with the bikes, Bike & Roll and other events, engages families in knowing safe routes and walks of commuting to our school.

Angela Calderon
Monroe Elementary Family Liaison

Bike & Roll to School Week by the Numbers:




4,053 Total Participants
including 2,954 students and 1,099 adults

... from **50 Schools** 

47 Schools Hosted Bike & Roll Events 

5 Schools Participated in the Citywide Art Contest 

2 Schools Did Both!
Edward R. Taylor Elementary and Ulloa Elementary 

37 SFUSD Schools Represented

Abraham Lincoln High, Alamo Elementary, Buena Vista/ Horace Mann K-8, Cesar Chavez Elementary, Chinese Immersion School at De Avila, Claire Lilienthal Elementary-Madison Campus, Clarendon Alternative Elementary, Cleveland Elementary, Commodore Sloat Elementary, Dolores Huerta Elementary, Edward R. Taylor Elementary, Francis Scott Key Elementary, Frank McCoppin Elementary, Galileo High, George Peabody Elementary, George R. Moscone Elementary, Glen Park Elementary, Grattan Elementary, Hillcrest Elementary, Jean Parker Elementary, Jefferson Elementary, John Muir Elementary, John Yehall Chin Elementary, Longfellow Elementary, Martin Luther King Jr. Academic Middle, McKinley Elementary, Miraloma Elementary, Monroe Elementary, Robert Louis Stevenson Elementary, Rosa Parks Elementary, San Francisco Community Alternative, San Francisco Public Montessori, Spring Valley Elementary, Sunnyside Elementary, Sunset Elementary, Sutro Elementary, Ulloa Elementary

13 Non-SFUSD Schools Represented

German International School of Silicon Valley, John McLaren Early Education, La Scuola International School, San Francisco Day School, Creative Arts Charter, San Francisco Schoolhouse, Live Oak School, Lycee Francais de San Francisco, Montessori House of Children, South of Market Child Care-Yerba Buena Gardens, Chinese American International School, French American International School, Peter's Place Nursery School

Feedback from

Bike & Roll to School Week Champions

Each school's Bike & Roll to School Week celebration is made possible by volunteer Bike Champions from the community who are eager to share the joy of healthy and sustainable mobility. Bike Champions register and help organize local events at their respective schools. The San Francisco Safe Routes to School team provides everything Champions need, from a robust event toolkit to marketing materials to prizes and incentives that can be distributed during the event, to host a successful event. This year, thanks to support from San Francisco Safe Routes to School, 82.1% of Champions said their schools' events were a success!

Champions were surveyed after Bike & Roll to School Week to help gain a better understanding about their experience hosting an event at their school. Here's what they shared:

97%
Schools would be interested in hosting a similar event in the future.

92.3%
The giveaways and incentives for students were good.

94.9%
The support provided by Safe Routes was helpful.

82.1%
School's event was successful.

Champions also shared additional feedback on the key strengths and areas for improvement for future Bike & Roll to School Week implementation.

Event Strengths:

- Kids loved it. Event felt like a celebration.
- Helped create a strong sense of community.
- Loved the giveaways and incentives.

Event Areas for Improvement:

- Better, earlier communication from San Francisco Safe Routes to School team
- More resources for events (promotional materials, food, incentives, etc.)

IV. Program Highlights: Activities



Walking School Buses

In addition to hosting annual events, San Francisco Safe Routes to School provides a wide variety of ongoing activities for schools to partake in. The program works in close partnership with schools to customize these offerings for the local context or for specific student populations. Continue reading for highlights from some of San Francisco Safe Routes to School's most popular activities from the 2023–2024 school year!

Many kids in San Francisco live within walking distance to school but may need support to make walking a reality. Walking School Buses help meet this need.

A Walking School Bus is an organized group of children who walk a regular route to school together with a supervising adult, making it safer and easier for students to get to school powered by their own two feet. Walking School Buses meet at a designated spot, such as a park or playground, and follow a regular route, picking up more children along the way (similar to a traditional school bus route). The purpose of a Walking School Bus is to reduce reliance on cars, promote physical activity, and make walking to school safer, more accessible, and more fun for students.

San Francisco Safe Routes to School program team members from Walk SF help schools design and implement Walking School Buses. In some schools, Walking School Buses are monthly, or more frequent, activities organized and maintained by dedicated school staff or parents. In other schools, the buses are special events organized by San Francisco Safe Routes to School staff, with the goal of building local capacity to maintain the Walking School Buses over time.



“Walking school buses inspire more families to try walking because they see how much fun kids are having and how positive walking can be for the whole community.”

-SF Safe Routes to School Program Team Member from Walk SF

Impact on Students:

- Increases pedestrian safety by walking in groups so they are more visible to cars.
- Builds students' and family members' confidence as pedestrians.
- Combats truancy by helping students get to school on time.
- Increases students' daily physical activity and forms healthy habits.

Impact on the Community:

- Reduces traffic congestion and traffic-related air pollution around schools.
- Builds community, as families and students have a chance to get to know each other.
- Creates fun community events and encourages a community culture of walking and being outside. When residents see children playing, walking, and enjoying city streets, they are more likely to walk, too.

School Spotlight

Walking School Buses at Tenderloin Community School

This year, the Tenderloin Community School (TCS) expressed interest in starting a Walking School Bus. The school already had a community partner, Safe Passage, that provided after-school walk support and knew that families would appreciate support in the morning hours as well. San Francisco Safe Routes to School worked in close partnership with school administrators, staff, and family liaisons to launch a monthly Walking School Bus series, hosting a total of five events between January and May 2024.

To ensure the Walking School Bus was accessible to a broad range of students, participants gathered at parks that were located near housing developments where many TCS families lived, such as Turk-Hyde Mini Park. On the mornings of the Walking School Buses, San Francisco Safe Routes to School program team members, school administrators and staff, community volunteers, and partners from Safe Passage collaborated to create a special and celebratory atmosphere for the students. They decorated meeting locations, played music, brought bubbles, and organized games for participants to play while waiting for others to gather. When it was time to start walking, students and staff put on neon vests to ensure they were visible to drivers and practiced safe crossing at intersections.

The monthly Walking School Bus events were a hit with the TCS community. Students and families embraced the Walking School Buses, and parents, grandparents, and other community members often joined along to do the walk as well. The events became fun opportunities to talk with neighbors and friends and come together to support the local school.

Adrian from Safe Routes to School is great at communicating with multiple community and school leaders as a means of spreading the word on providing safe routes to school for the community through initiatives such as a Walking School Bus. He values community input a lot and is always working to know what is the best way to reach our families, such as best types of communication as well as meeting locations for the Walking School Bus. Adrian has been very flexible to the needs of the community and is a warm presence to have around our TCS families!"

-Jucali Casas

Tenderloin Community School Family Liaison



IV. Program Highlights: Activities

» Bike P.E.

Many SFUSD students do not own a bike, lack the ability to ride a bike, or have limited experience navigating San Francisco's streets on two wheels.

Additionally, numerous students live or attend school in areas without essential bike infrastructure, such as protected bike lanes or bike-repair shops. Addressing these barriers head-on, Bike P.E. is a comprehensive program that supports SFUSD students in becoming proficient and confident bike riders. The program equips all participants with the basic skills needed to ride a bike in San Francisco, or wherever they may be, making biking a viable option for transportation, fitness, or enjoyment.

Since 2007, Bike P.E. has been delivered in schools across the city by San Francisco Safe Routes to School program team members from YBike, in close partnership with SFUSD's P.E. Department. While each iteration of Bike P.E. is a little different, classes typically include a lesson in proper helmet fit followed by extensive hands-on bike-riding practice. The program also provides bikes, helmets, and bike storage for schools; training and professional development for teachers; and technical support for schools setting up the class for the first time. Bike P.E. is delivered as a two- or three-week elective unit in SFUSD middle and high schools. It is also provided as a one-day, off-site class for elementary school students. In either case, Bike P.E. classes take place during the school day, which allows all students to participate equitably, regardless of bike ownership or prior ability.



Impact on the Community:

- Students learn to ride a bike for the first time or increase their biking skills.
- Students increase their health through physical activity.
- Students increase their access to the city through cycling.

Impact on Students:

- Reduces traffic congestion and traffic-related air pollution around schools.
- Increases cycling around the city.
- SFUSD teachers learn to teach Bike P.E. and increase school program offerings.

1,258 Students
from across 20 SFUSD
schools participated in
the Bike P.E. program
this year

13 One-day Classes
for elementary school students

9 Multi-week Bike P.E. Elective Units
for middle and high school students

FUN FACT: The first Bike P.E. class was held during the 2007–2008 school year at Lowell High School after P.E. teacher and avid bike commuter, Mr. Terence Doherty, found school-archive photos from the 1970s of students using bikes during P.E. and was inspired to bring bike lessons to the school!

School Spotlight

Bringing Bike P.E. to Students with Special Needs at Roosevelt Middle School

In an effort to reach new student populations during the 2023–2024 school year, San Francisco Safe Routes to School program team members reached out to the SFUSD Special Olympics Coordinator to inquire about expanding the Bike P.E. program to better serve students with diverse needs. Program team members were connected to the Special Education Department at Roosevelt Middle School and began planning in close partnership with P.E. teachers, paraeducators, and the school’s principal.

Together they adapted the Bike P.E. program to teach students with a range of mild-to-moderate learning and physical needs, including those with Autism and gross-motor difficulties, how to ride bikes independently. By April 2024, the new course was rolled out at Roosevelt, serving a total of 24 students and 6 adults. More than half (14 of 24) of the students were first-time riders! By providing a course focused on these students, instructors were able to hone in on techniques that particularly suited their unique learning styles and needs. By the end of the Bike P.E. unit, all students felt comfortable joining the program team for a ride outside of the schoolyard in Golden Gate Park.

The Bike P.E. course at Roosevelt Middle School marks the first time San Francisco Safe Routes to School has offered a class specifically tailored for students with special learning needs. This would not have been possible without the dedication and support of Roosevelt’s leadership and staff, especially Special Education Department Head Brian Lau, who put immense energy into advocating for and staffing the program. Mr. Lau even received an award from the SFUSD Board of Supervisors in recognition of the outstanding program.

“The YBike team provided the knowledge, care, and expertise to transform our nervous learners into bold riders. They demonstrated the joys of biking, instilled confidence and bravery, and provided lifelong memories for our students, families, and staff.”

-Brian Lau

Special Education Department Head
at Roosevelt Middle School



See Bike P.E. in action!

Mr. Lau made a video that shows each student mastering how to ride a bike. In the video, viewers can hear Mr. Lau’s infectious laugh and hear his smile through every word he says. The students reciprocated with smiles of their own.



IV. Program Highlights: Activities

» Drop-In Bike-Practice Sessions

Drop-In Bike-Practice Sessions are events that take place at schools and in community spaces to give participants of all ages opportunities to learn to ride a bicycle, practice riding skills, and learn how to ride safely on city streets.

These sessions are important because they provide access to safe spaces to practice riding, which many youth and families may not have access to otherwise due to space constraints within the city. Program team members organizing the event often set up an obstacle course so students can learn to weave, stop, and watch for traffic dangers. Participants work on skills independently and one-on-one with an instructor when necessary.

The Drop-In Bike-Practice Sessions are led by San Francisco Safe Routes to School program team members from the San Francisco Bicycle Coalition (SFBC). The Drop-In Sessions became part of the San Francisco Safe Routes to School program for the first time last year. Similar to Bike P.E., the purpose of the Drop-In Sessions is to get students and families comfortable and confident with biking around the city so they can hopefully transition to biking as a regular means of transportation to and from school.

Impact on Students:

- Students learn to ride bicycles.
- Students gain immediate confidence in their bike-riding skills.
- Students learn to ride safely in a designated space and on city streets.

Impact on the Community:

- Community members learn to ride bicycles safely on city streets.
- Reduces traffic and congestion around schools.
- Provides access to a new mode of transportation for families.
- Encourages healthier lifestyles
- Provides new opportunities for the community to get to know each other.
- New riders gain freedom and independence.



“This event empowers the community by providing a new mode of transportation while encouraging healthier lifestyles, improved accessibility, and new opportunities for the community to get to know each other more and grow closer together by breaking mobility barriers.”

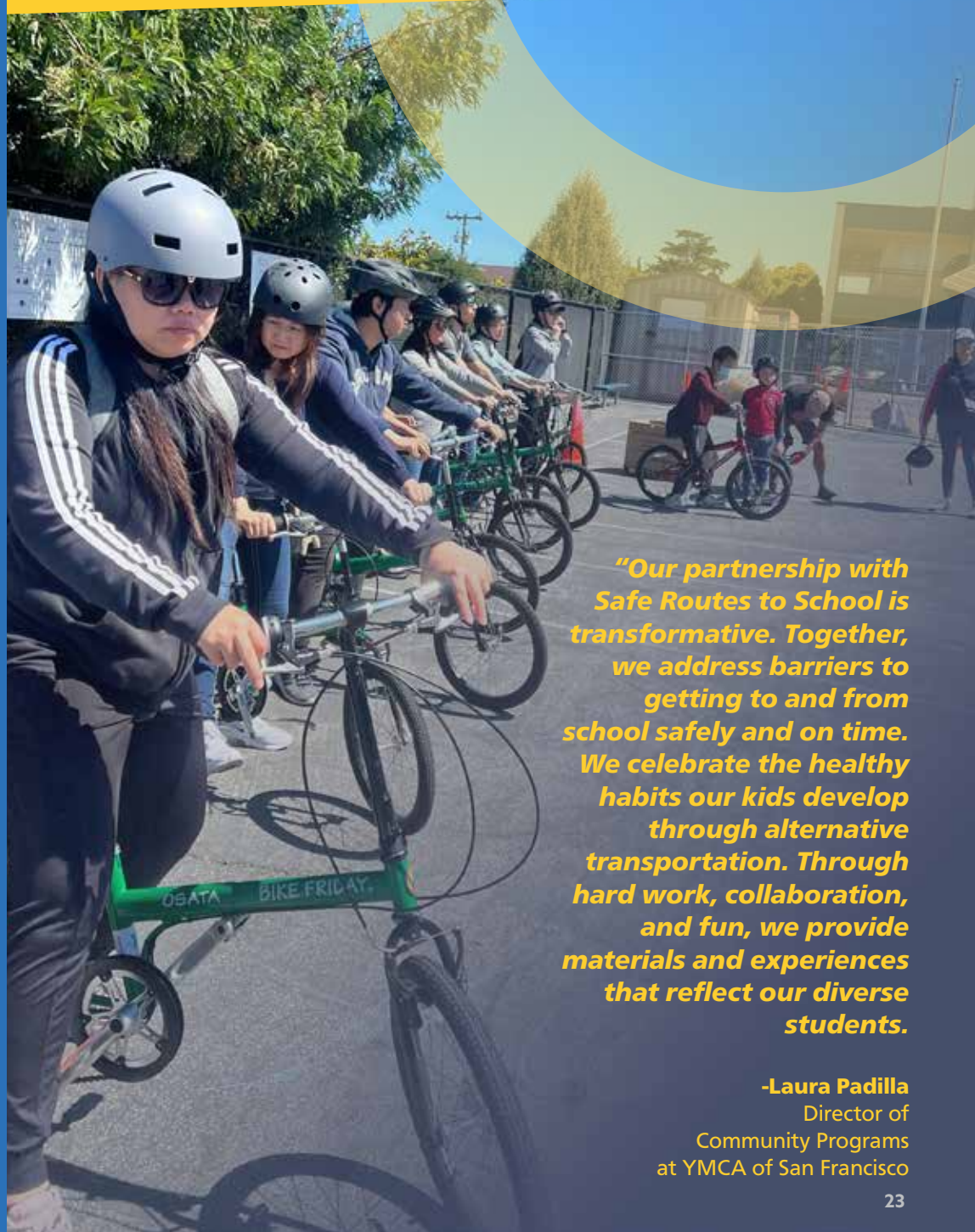
-SF Safe Routes to School Program
Team Member from San Francisco Bicycle Coalition

School Spotlight

Drop-In Bike-Practice Sessions at Monroe Elementary

Monroe Elementary School is located in the Excelsior community in southeast San Francisco. The neighborhood is home to many multicultural families who expressed an interest in biking. Although San Francisco Safe Routes to School was already providing support to Monroe Elementary as one its designated Focus Schools, there was a greater need for community support in the form of bikes and bilingual bike education. Few students owned bikes, many did not have the skills to ride safely on busy streets, and most did not have access to safe spaces in which they could practice riding.

To address these needs, San Francisco Safe Routes to School program team members from the SFBC secured an Excelsior Collaborative Community Action Grant. Through this special grant, San Francisco Safe Routes to School was able to expand programming at Monroe, developing a series of Drop-In Bike-Practice Sessions where students and families came together to practice biking. These sessions were held in May and June 2024 and were provided in three languages—Chinese, Spanish, and English—to meet the needs of the diverse school community. Additional community partners, including the Excelsior Bike Club, Excelsior Collaborative, Community Well, and the YMCA After-School Program, helped conduct community outreach to make these events successful. Furthermore, participants who attended at least two practice sessions were eligible for a free bike through SFBC’s Bike It Forward program. **By the end of the school year, the Drop-In Sessions taught bike-riding skills, safety, and maintenance to 92 participants and provided over 70 bikes, 70 helmets, and 70 u-locks to students and families.**



“Our partnership with Safe Routes to School is transformative. Together, we address barriers to getting to and from school safely and on time. We celebrate the healthy habits our kids develop through alternative transportation. Through hard work, collaboration, and fun, we provide materials and experiences that reflect our diverse students.

-Laura Padilla
Director of
Community Programs
at YMCA of San Francisco

IV. Program Highlights: Activities

» Muni Field Trip

Many students want to take Muni or other forms of public transit but lack the skills and confidence to do so on their own. Muni Field Trips, a new San Francisco Safe Routes to School activity introduced this school year, were created to help students feel confident, safe, and knowledgeable about using public transit options in the city.

Led by program team members from San Francisco Transit Riders, Muni Field Trips are fun interactive experiences where participants use Muni buses to travel to educational destinations around the city. The goal is to provide students with a safe environment to learn about and explore public transportation, equipping them with the tools and confidence to use it independently in the future.

During Muni Field Trips, students travel by bus to a set location accompanied by San Francisco Safe Routes to School program staff. Along the way, they learn about public transit and safe riding practices through a structured curriculum and interactive activities like Muni Bingo. Muni Field Trips build on work done by SFUSD and SFMTA to develop a Muni-centric curriculum for students. While many San Francisco schools have used Muni informally for field trips for years, this program formalizes the process, integrating public transit education into the field trip's core learning objectives and connecting students with their communities through shared transit experiences.



Impact on Students:

- Learn to take Muni through the city and gain confidence using public transit.
- Understand what to do if they feel unsafe on Muni.
- Have fun and see new parts of the city.
- Increased awareness of the various programs and resources offered by SFMTA, such as Free Muni for All Youth.

Impact on the Community:

- Students sharing what they learn with their friends and families helps support mode shift across the broader community.
- As public transit use increases, communities experience positive effects such as fewer cars on the road, less congestion, safer streets, and cleaner air.

School Spotlight

Balboa High's Field Trip to Muni Potrero Yards



"The way that the tour guides described how everyone takes Muni and how everyone's part of this big family makes you want to join in."

-Balboa High student

In April 2024, 17 Balboa High School students went on San Francisco Safe Routes to School's first-ever Muni Field Trip. They visited the Muni Potrero Yard Bus Facilities where they got to tour the space and learn about Muni operations and the Potrero Yard Redevelopment project. A key component of the field trip was actually using transit to reach the destination. Participating students gathered at the school on the morning of the event and reviewed a map that showed the field trip route and destination. Later that day, they boarded a Muni bus to travel to their destination. While on board, San Francisco Safe Routes to School program staff led the students through a series of interactive activities that helped familiarize them with their new surroundings. They also learned the Eight Steps to Riding Muni and Muni Safety Tips.

Once they reached their destination, students went on an educational tour of the historic Potrero Yard, which was built in 1915 and currently serves as one of Muni's trolley bus yards. The two-story structure originally operated as a streetcar facility that housed 100 streetcars. It has since been expanded to hold 138 40-foot and 60-foot trolley buses, but it is undergoing major improvements due to the building's age and changes in bus fleet technology.² After the tour, a Bike Blender was set up at a nearby park. Students blended their own smoothies, shared transit experiences, asked questions, and reflected on key learnings from the day.



Eight Steps to Riding Muni:

1. Decide which bus or train route will take you to your destination.
2. Locate your bus stop or train stop on the bus route.
3. Go to your stop and prepare your payment while you wait for your bus.
4. Wait for the bus to come to a complete stop and board the bus.
5. Pay your fare or use your bus pass (remember, youth 18 and under ride Muni for free—no proof of payment required!).
6. Take a seat if one is available.
7. Press the Stop Request button or pull the cord to signal to the driver that your stop is next.
8. Wait for the bus to come to a complete stop and get off at your destination.

Muni Safety Tips:

1. Always be aware of your surroundings; know where you are and what/who is around you.
2. Keep track of your belongings; avoid unnecessary distractions.
3. Ask the Muni operator, police officer, or other adult nearby for help if needed.
4. Keep a whistle or personal safety alarm handy and make sound if in trouble.
5. Please hold on when the bus is in motion; sometimes sudden stops are necessary.
6. Identify the nearest entrance/exit and be prepared to board or get off the bus.

IV. Program Highlights: Activities

Healthy Food Meets Healthy Modes of Transport

San Francisco Safe Routes to School is helping students build holistic healthy lifestyle habits.

Healthy eating and the physical exercise that comes from active forms of transportation like walking and biking go hand-in-hand as parts of a healthy lifestyle. Recognizing this synergy, the San Francisco Safe Routes to School program launched a new partnership with SFUSD Student Nutrition Services (SFUSD SNS) for National School Breakfast Week, held March 4–8, 2024. The program team worked with schools to plan walking and biking events that students could participate in on their way to breakfast. In total, **159 students across 7 SFUSD schools participated in San Francisco Safe Routes to School events during National School Breakfast Week**, promoting the development of good lifestyle habits among students.

Another popular San Francisco Safe Routes to School activity, the Bike Blender, brings healthy food and exercise together in an even more direct way, as students cycle on stationary bikes with blenders attached to make delicious fruit smoothies. This innovative activity not only emphasizes the importance of nutritious eating and regular physical activity but also engages students in a fun and interactive experience. There were at least **18 Bike Blender events** held during the 2023-2024 school year, **engaging over 1,400 students!**

By partnering with SFUSD SNS and organizing activities like the Bike Blender, San Francisco Safe Routes to School helps promote holistic, healthy lifestyle habits for students and local communities, making a significant contribution to the overall well-being of residents across the city.





"Having the smoothie bike really elevates our event to a party! The students loved the fresh, healthy smoothies provided, and it's so cool to be able to give our Chavez students this unique experience!"

-Ariel Feingold-Shaw
Cesar Chavez P.E. Teacher

"My experience with Adrian and the SFBike crew has been phenomenal. Adrian is always ready to join an event, Walk & Roll, as well as our Dia de los Niños. He always has a smile and a SI SE PUEDE attitude. Even in a crunch he will come through. He is truly a hero in our community. The students always love the Bike Smoothie. I wish we could have 3 or 4 bikes here at a time. Hehe! Muchisimas Gracias, Rafael Nuñez"

-Ariel Feingold-Shaw
Cesar Chavez P.E. Teacher



V. Community Outreach & Engagement

Deep and consistent community engagement is the cornerstone of the San Francisco Safe Routes to School program. It is important for San Francisco youth, families, and schools to know about the program before they can join in. **After all, how can students get involved if they don't know the program exists?**

To spread the word and build support, the San Francisco Safe Routes to School team regularly gets out into the community, attending events and sharing information about the Four Fun Ways in neighborhoods all over the city. The program also uses social media, a website, and an online newsletter to continuously share resources and information about upcoming programs and events. Staying true to the program's commitment to equity, outreach materials are typically available in multiple languages, and multilingual team members are always on hand to provide translation during events so that everyone has the chance to learn about and participate in the SF Safe Routes to School program.

Over the course of the 2023–2024 school year, San Francisco Safe Routes to School participated in 21 in-person community outreach events, including tabling at 20 public events and 1 classroom presentation. Through these efforts alone, the San Francisco Safe Routes to School team was able to reach over 2,700 San Francisco residents!



Community Outreach by the Numbers



21 In-person Community Outreach Events in San Francisco



2,734 People Engaged during In-person Events, including 1,216 students and 1,518 adults



298 Social Media Post Impressions across All Platforms (Facebook, Instagram, X/Twitter)



7,025 Social Media Followers across All Platforms (Facebook, Instagram, X/Twitter)

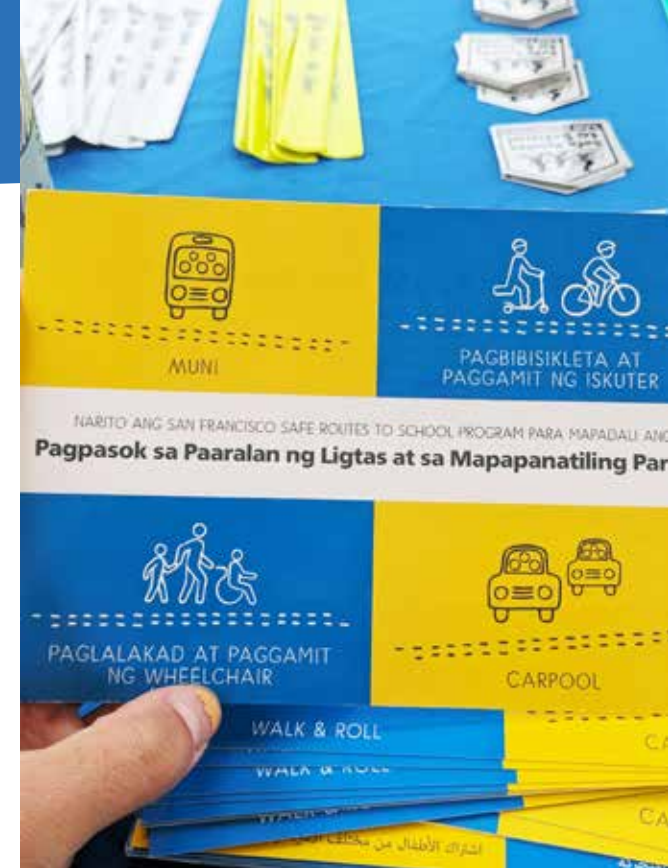


1,180 Newsletter Subscribers, with a 42% Open Rate

Community Outreach Impact

San Francisco Safe Routes to School's ongoing efforts to build authentic connections with San Francisco students, families, and schools have resulted in an uptick in awareness and perception of the program over time. **Based on survey data from the 2023–2024 school year:**

- **65.2%** of school administrators and **70.6%** of parents and caregivers are **Somewhat or Very Familiar with the San Francisco Safe Routes to School program.**
- Parents and caregivers gave the program an overall Net Promoter Score of **82.4**, indicating **a strong positive perception and high level of satisfaction with the program.**
- There was a **25-point** increase in the Net Promoter Score reported by school administrators from the beginning to the end of the school year, indicating **a positive change in perception of the program over time.**
- **39.1%** of school administrators (9 of 23) believe the **program is effective at improving safety.**
- **30.4%** of school administrators (7 of 23) believe the program is **effective at promoting mode shift to one of the Four Fun Ways.**



"We want to sincerely thank you from the bottom of our hearts for your participation at today's SOTA/Academy Wellness Fair! I heard amazing feedback from our students. We really appreciate all that you do and for showing up and dedicating your time to our students and community as a whole. We are truly grateful (especially for still making it out in the rain!), and we'd be delighted to see you all again at our fair next year. Keep doing amazing work!"

-Wellness Fair Event Organizer

VI. Commitment to Equity



Equity is the foundation of the Safe Routes to School program, and a shared priority for both the SFMTA and SFUSD.

Many transportation disparities disproportionately impact low-income communities and communities of color. These communities often live in areas with higher rates of traffic collisions, experience more pollution-related health issues such as asthma, and have less access to alternative transportation options. A safe, welcoming, and inclusive program requires centering and celebrating the voices of youth and families who have been historically underserved and excluded.

The program also recognizes that for many residents from historically underserved groups, active and shared modes such as walking or public transit may already be the primary modes of travel to and from school. In these cases, the primary goal is to improve the safety of students' journeys by providing education on safe practices, increasing access to resources like bicycle helmets and protected spaces to practice bicycling, and providing other support as needed to improve safety.

With this commitment to equity in mind, outreach, events, and activities intentionally seek to engage students and families from a diverse range of backgrounds and to eliminate barriers to transportation access. During the 2023–2024 school year, the program did this by offering culturally responsive programming tailored to the unique needs of diverse groups, including increasing language access, serving students of different abilities, and continuing to engage Focus Schools across the district.



Increasing Language Access

San Francisco is a highly diverse and multicultural city. In fact, 43.3% of San Francisco residents speak a language other than English at home.³ This means that many students and families may feel more comfortable communicating in a language other than English.

43.3%
of SF residents
speak a language
other than
English at home

San Francisco Safe Routes to School has always recognized the importance of providing information and program instruction in multiple languages. The program does this by increasing availability of in-language materials and interpreters at events. The program's many bilingual and bicultural team members also help ensure that all students and families are welcome and can fully participate in the San Francisco Safe Routes to School program.

During the 2023–2024 school year, San Francisco Safe Routes to School continued to expand language access by providing multilingual materials and on-site translation services in a range of languages. Overall, more than half (56.2%) of San Francisco Safe Routes to School events featured some form of written or spoken translation in a language other than English. Translation in some form (written or oral) was available in up to seven different languages, including Spanish, Arabic, Chinese, Japanese, Filipino (Pilipino or Tagalog), Vietnamese, and Samoan.

Including Students of All Abilities

San Francisco Safe Routes to School is proud to embrace diversity in all its forms. This includes making the appropriate accommodations so students with different levels of mental and physical abilities can participate fully in program events and activities. One of the key ways to do this is by providing access to adaptive bicycles during biking-related events such as Bike P.E. and Drop-In Bike-Practice Sessions. The program also uses intentional language, such as including the word rolling in event descriptions, so youth and other community members who may not be physically able to participate in walking or biking feel comfortable and included.



Focusing on Schools with Persisting Inequities

In the fall of 2019, San Francisco Safe Routes to School used data on traffic collisions, commuting patterns, and student demographics to identify 33 schools that faced compounding barriers and inequities in transportation safety and access. These schools, known as Focus Schools, are prioritized in program planning and receive dedicated support and attention from a San Francisco Safe Routes to School school engagement lead throughout the school year.



Focus School Engagement

93.9% of Focus Schools Participated any SF Safe Routes to School Event (31 schools)

51.5% of Focus Schools Participated an Annual Event, such as Transit Month, Walk & Roll to School Week, or Bike & Roll to School Week (17 schools)

53.5% of total Program Events included Participants from one or more Focus Schools! (83 of 155 total events)

In 2023–2024, San Francisco Safe Routes to School school engagement leads had almost 500 interactions with the 33 Focus Schools, with an average of 14.8 interactions per school. Interactions include any outreach touch point, such as attending school events, attending parent or student organization meetings, being present at morning drop-off or afternoon pick-up, or reaching out to schools via personalized emails or phone calls. The end goal of any interaction is the same: to ensure Focus Schools feel included and supported in the San Francisco Safe Routes to School program.

Of the 33 Focus Schools, 31 went on to participate in or host San Francisco Safe Routes to School activities and events during the school year. Additionally, over half (53.5%) of the 155 total events held this school year included participants from one or more Focus Schools!

While there is still room for improvement to ensure all Focus Schools are deeply engaged in the program, the outcomes from this year demonstrate San Francisco Safe Routes to School's values and commitment to equity in action.

VI. Commitment to Equity

Complete List of Focus Schools with Key Performance Metrics

TABLE 2

	Focus School	Total Interactions	Total Events	Transit Month	Walk & Roll to School Week	Bike & Roll to School Week
1	A.P. Giannini Middle	18	2	✓		
2	Abraham Lincoln High	29	2			✓
3	Alvarado Elementary	3	3			
4	Argonne Elementary	17	3		✓	
5	Balboa High	10	2			
6	Bessie Carmichael/FEC	28	5			
	> Bessie Carmichael/FEC-Elementary Campus	20	3			
	> Bessie Carmichael/FEC-Middle School Campus	8	2			
7	Cesar Chavez Elementary	8	8			✓
8	Charles Drew College Preparatory Academy	3	1			
9	Claire Lilienthal Elementary	5	1			✓
	> Claire Lilienthal Elementary-Madison Campus	2	1			✓
	> Claire Lilienthal Elementary-Scott Campus	3	0			
10	Commodore Sloat Elementary	19	4			✓
11	Dianne Feinstein Elementary	19	2			
12	Edward R. Taylor Elementary	15	7		✓	✓
13	Edwin and Anita Lee Newcomer	14	0			
14	El Dorado Elementary	27	1			

	Focus School	Total Interactions	Total Events	Tansit Month	Walk & Roll to School Week	Bike & Roll to School Week
15	Francis Scott Key Elementary	6	2			✓
16	Herbert Hoover Middle	13	1	✓		
17	Hillcrest Elementary	3	1			✓
18	James Denman Middle	5	1			
19	Jean Parker Elementary	25	4		✓	✓
20	John Yehall Chin Elementary	26	2			✓
21	Lowell High	13	0			
22	Malcolm X Academy	5	1			
23	Marshall Elementary	20	3			
24	Martin Luther King Jr. Academic Middle	13	7			✓
25	Monroe Elementary	27	11			✓
26	Paul Revere Elementary	12	6			
27	Phillip and Sala Burton Academic High	4	2			
28	Presidio Middle School	17	1			
29	Redding Elementary	6	4			
30	Spring Valley Elementary	18	3			✓
31	Sunnyside Elementary	19	1			✓
32	Tenderloin Community	38	10		✓	
33	Thurgood Marshall High	4	1			

VII. Infrastructure Collaboration

The San Francisco Safe Routes to School program works closely with other teams within the San Francisco Municipal Transportation Authority (SFMTA) to provide a **comprehensive approach to improving travel options for students and families using the “Four Fun Ways.”**

Families’ transportation choices are shaped by numerous factors, including distance, access to vehicles, bikes, or other rolling devices, weather conditions, terrain, personal abilities (both physical and mental), and infrastructure conditions, which encompass both actual and perceived safety.

The Safe Routes to School program addresses several factors influencing family transportation decisions. By collaborating with other teams within SFMTA, the program fosters a more holistic approach that responds to a broader range of influences.

The SFMTA is dedicated to improving street safety for our most vulnerable, striving to create safer streets that are accessible and inclusive for people of all ages and abilities. This is why improving conditions around schools is a priority that brings together many teams including:

- SF-Safe Routes to School
- Crossing Guards
- Parking Control
- Traffic Calming
- Muni (transit service)
- Muni Transit Assistance Program (MTAP)
- Transportation Engineering
- SFUSD Transportation



Infrastructure Support by the Numbers

 **195** Crossing Guards across San Francisco help students and families get to school safely

 **100** Traffic calming devices during the 2023-2024 fiscal year all within 1,000 feet of public and private schools around the city

 **13** Muni lines with school trippers (bus trips that start their route at the school and is timed for afternoon dismissal) serving 16 schools

Crossing Guards, Parking Control Officers, and Transit Ambassadors play a vital role in ensuring the safety of students and families. They help maintain hazard-free pick-up and drop-off areas and help keep Muni a safe and inviting transit choice.

Muni operators and hundreds of behind-the-scenes support staff such as service planning and maintenance help **move thousands of students across the city to and from school every day.**

The SF-Safe Routes to School program frequently hears from community members about the importance of infrastructure improvements to make walking or rolling to school safer. **We listen to community feedback and coordinate with SFMTA teams who can investigate safety concerns.**

The SFMTA implements safe infrastructure treatments around schools intended to slow traffic and improve the visibility of children walking or rolling. Traffic calming improvements include speed humps, raised crosswalks, speed cushions and speed tables. Curb management strategies reduce congestion and enhance safety by clearly designating passenger loading zones for private vehicles and school buses. Together, the many teams of the SFMTA and SFUSD work together to provide students and families with safe, practical, and efficient transportation options to make taking active and shared modes of transportation to school easier and more enjoyable.



VIII. Creating Lasting Impact

GOAL 1 Mode Shift

While earlier sections of this report highlight the incredible work of the San Francisco Safe Routes to School program over the course of the school year, the program’s **ultimate goal is to create lasting impact in San Francisco by increasing the number of people using active and shared modes of transport and reducing the number of school-related vehicle collisions.**

To achieve this, all San Francisco Safe Routes to School activities and events work together to promote incremental behavior change that leads to lasting change and impact over time.

This section explores the program’s broader impacts by focusing on key indicators such as mode shift, safety, and changes in school-level policies and behaviors. Key findings illustrate the progress that the program has made in moving the needle toward the goals as well as the work that still lies ahead.

By 2030, the program will reduce single-family-vehicle trips from 48% in 2018 to 30%, which aligns with the SFUSD Board of Education resolution to pursue equitable and sustainable transportation.

Mode shift means students and community members have actually changed the way they travel to school, opting to use one of the Four Fun Ways—walking, biking, using public transit, or carpooling—instead of a single-family vehicle. Changes in mode shift indicate that the San Francisco Safe Routes to School program has achieved its mission of creating lasting behavior change in the community.

Every two years, San Francisco Safe Routes to School conducts a district-wide School Travel Tally to understand what modes students are currently using to travel to and from school and to track progress toward the mode shift goal. Analysis of the most recent School Travel Tally (2022–2023), representing data from almost 100 SFUSD schools (including 70 elementary, 12 middle, and 14 high schools), reveals that about **half (50.3%) of SFUSD students currently commute to school in a single-family vehicle** (fig. 1). This is a marked increase from previous years and puts the program off target from the 30% by 2030 goal (fig. 2).

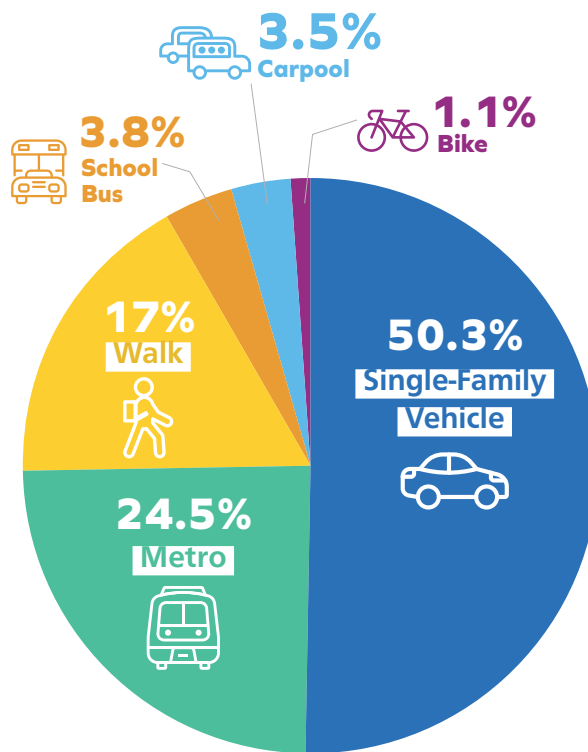


Fig 1. Transportation Modes Used by Students

It should be noted that 2022–2023 is the first year following the COVID-19 pandemic that Student Travel Tally data is available, and it in many ways represents a new baseline for post-pandemic behavior. The pandemic began in March 2020 and had major implications on key aspects of people’s lives, including travel decisions. **During and after the height of the pandemic, San Franciscans of all ages showed an increase in single-family vehicle use.** At the same time, there was a major reduction in public transit use, while walking and biking slightly increased.⁵

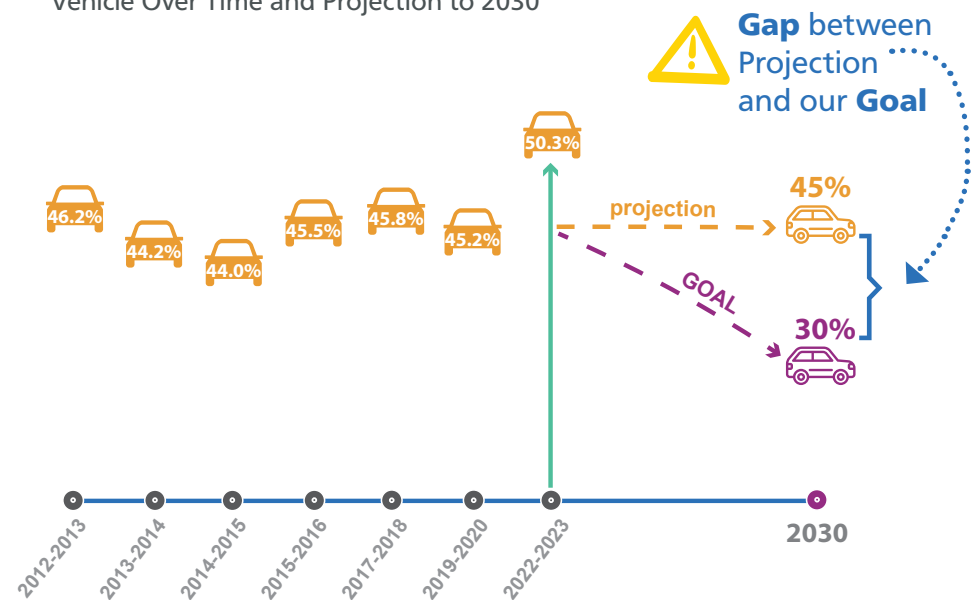
Given this context, when looking ahead to the goal for 2030, it makes sense to consider two different scenarios. The first looks at the trend in single-family-vehicle use before the pandemic—was it moving in the right direction to meet the goal of 30% by 2030? The second is to look at how the most recent data point in single-family-vehicle use changes the starting point. Both of these scenarios are shown in figure 2; the orange dotted line is a projection of the trend established in previous years, while the green arrow shows the new post-pandemic starting point. **In either scenario, San Francisco Safe Routes to School recognizes that it is currently not on track to meet the target of reducing single-family-vehicle use to 30% by 2030.** Even with a return to the pre-pandemic trend, a notable gap remains between the projected and desired outcome.

There are many possible reasons why this gap may exist. Determining which mode to use to commute to and from school is complex, and there are many factors outside of the control of the San Francisco Safe Routes to School program that may influence students’ and caregivers’ travel decisions. These factors include student age, distance from school, local topography and terrain, and the state of local infrastructure (bike lanes, transit routes, sidewalks for walking, etc.). Additionally, SFUSD’s unique

school choice policy and school assignment process enables students to attend schools that may be located far outside of the neighborhood in which they live. When schools are located far from students’ homes, it may not be feasible to walk, bike, or roll to school, and other options like reliable public transit may not be readily available. It is important to understand how these external realities may impact the program’s ability to successfully reach the 2030 mode shift goal.

Regardless of these challenges, San Francisco Safe Routes to School hopes to continue narrowing the remaining gap through ongoing program efforts over the next five years.

Figure 2. Students Commuting by Single-Family Vehicle Over Time and Projection to 2030



VIII. Creating Lasting Impact

Promising Trends

While the ultimate mode shift goal has not yet been reached, recent data on transportation choices from the School Travel Tally, SFMTA, and other sources reveals some promising trends.

Transit use in San Francisco is back on the rise.

At the beginning of the COVID-19 pandemic, weekday Muni ridership in San Francisco dropped substantially. Average weekday boardings fell from 713,970 in February 2020 to 85,660 by April 2020, an unprecedented 88.0% decrease. While Muni ridership has yet to fully recover to pre-pandemic levels, it has been on a steady rise. As of June 2024, average Muni ridership is already over five-times higher than its lowest point during the pandemic in April 2020.⁶



Muni Ridership

5X

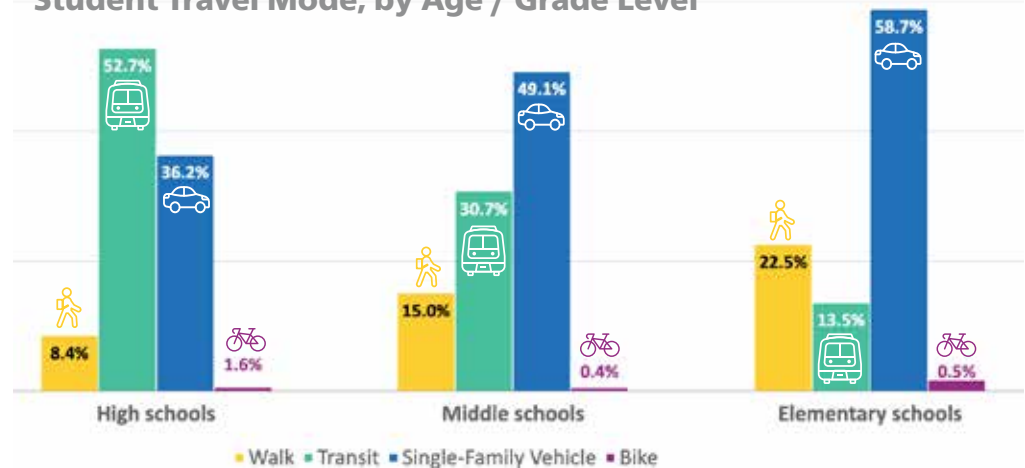
Higher than Pandemic

Mode Choices Vary by Time of Day.

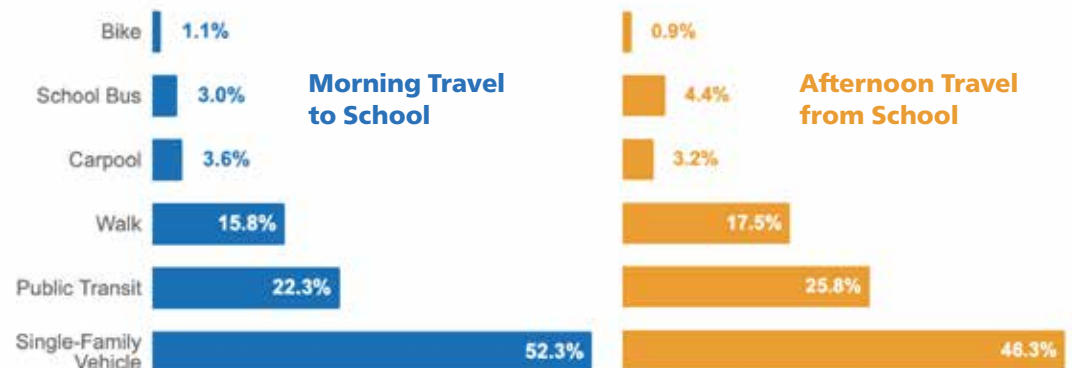
Transportation mode use varies considerably based on factors such as time of the day and student age. For example, single-family-vehicle use decreases by 4.5% during the afternoon (pick-up) compared to the morning (drop-off).

Mode Choices Vary by Age. Elementary school students tend to walk at higher rates than those in middle or high school. As students age, walking rates decrease, but public transit use increases. In 2022–2023, the use of Muni, cable cars, buses, or BART even surpassed car commuting at the high school level. This trend may be attributable to the fact that distance from school typically increases for older students, which makes transit use a more convenient and viable option than walking or biking.

Student Travel Mode, by Age / Grade Level



Student Travel Mode, Morning vs. Afternoon



» Schools That Are Leading the Way.

Additionally, there are many schools in SFUSD where students already use the Four Fun Ways at high rates.⁷

Any of the

FOUR

FUN

WAYS

93.5%	Mission Education Center (Elem)
82.2%	Mission High
78.7%	Thurgood Marshall High School
77.4%	SF International High
73.9%	Galileo High
73.3%	Tenderloin Community (Elem)
67.9%	Francisco Middle
67.6%	John O'Connell High
66.6%	Everett Middle
65.3%	Gordon J. Lau Elementary



WALKING

45.0%	Tenderloin Community (Elem)
40.9%	Yick Wo Elementary
39.7%	Grattan Elementary
38.9%	Bessie Carmichael Elementary
38.2%	Malcolm X Academy (Elem)
37.7%	Jean Parker Elementary
35.2%	Redding Elementary Alamo Elementary
35.2%	Alamo Elementary
35.1%	Harvey Milk Elementary
34.6%	Visitacion Valley Middle School



BIKING

8.1%	Claire Lilienthal-Madison Campus
7.2%	George Peabody Elementary
6.5%	Harvey Milk Elementary
6.0%	Alvarado Elementary
5.9%	Grattan Elementary
5.6%	Francis Scott Key Elementary
5.6%	Bret Harte Elementary
4.7%	Bessie Carmichael Elementary
4.4%	Frank McCoppin Elementary
3.7%	McKinley Elementary



CARPOOL

16.3%	Bryant Elementary
13.9%	Bret Harte Elementary
12.0%	Guadalupe Elementary
10.9%	William L. Cobb Elementary
9.5%	SF Community (K-8)
9.2%	Chinese Immersion Elementary
9.0%	Presidio Middle
8.8%	Alice Fong Yu Elementary
8.7%	Claire Lilienthal-Scott Campus
8.3%	Sunnyside Elementary



TRANSIT

93.5%	Mission Education Center (Elem)
70.7%	SF International High
70.2%	Galileo High
68.2%	Mission High
65.2%	Thurgood Marshall High School
58.3%	June Jordan High
51.8%	George Washington High School
47.7%	Raoul Wallenberg High
45.4%	Lowell High
44.0%	Willie L. Brown Jr. Middle

VIII. Creating Lasting Impact

GOAL 2

Safety/Reducing School-Related Collisions

By 2030, the program will reduce the number of school-related collisions in San Francisco by 50% from an annual average of 2 severe- and 32 total-injury collisions. This is an SFMTA-wide goal and aligns with the City's Vision Zero SF initiative to eliminate all traffic deaths in San Francisco.

During the 2023–2024 school year, there were a total of 13 school-related collisions⁸ in SFUSD, none of which resulted in severe or fatal injuries. Most school-related collisions this year were pedestrian related rather than bicyclist related. Of the pedestrian collisions, most occurred while a pedestrian crossed an intersection using a crosswalk. The overall trend shows a decrease in collisions since 2005.

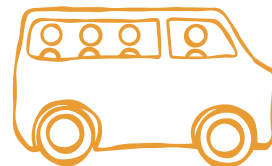
Based on this, **the goal of reducing school-related traffic collisions and deaths has already been reached.** In fact, there have been zero fatal school-related collisions over the last two school years, indicating promising trends for the city as a whole.

Still, despite the positive data, those who live and work in neighborhoods across the city know that there is still work to be done to ensure all streets are safe. For example, in August 2023, a four-year-old child was killed in a pedestrian traffic collision at the intersection of Fourth and King, located in San Francisco's South of Market (SoMa) neighborhood, about half a mile from the Bessie Carmichael Elementary School campus.⁹ Though this is not technically counted as a school-related collision because the child was less than five years old, it indicates that issues with street safety may persist in certain parts of San Francisco. This example is a testament to the ongoing importance of the San Francisco Safe Routes to School program.

School-Related Collisions Over Time (2013-2023) 

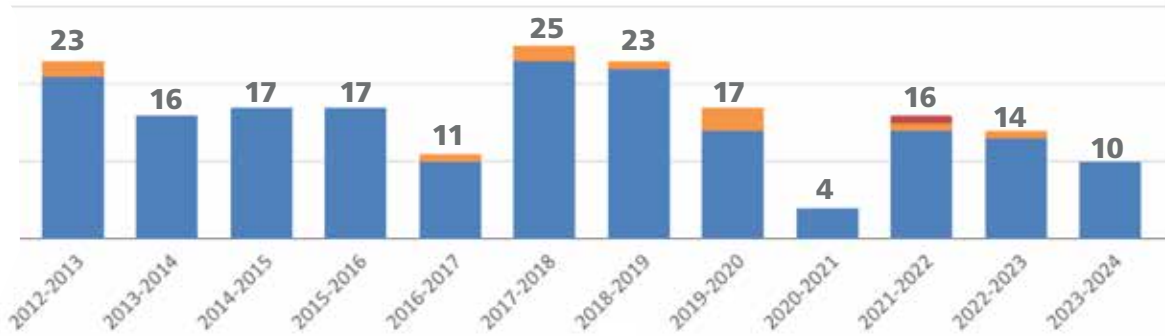


In 2023–2024, there were zero child fatalities from school-related collisions in San Francisco!

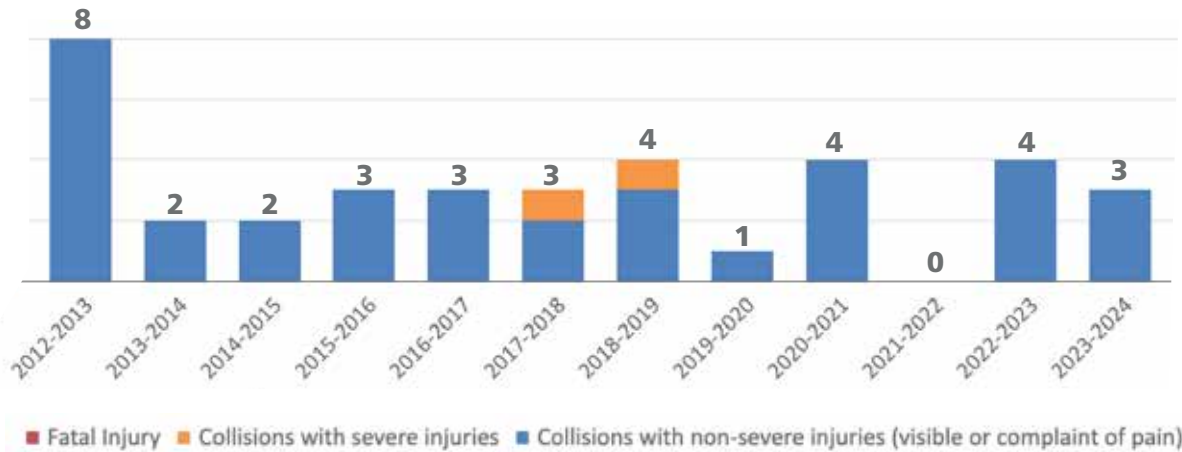


Other Signs of Change

School-Related Collisions Involving Pedestrians



School-Related Collisions Involving Bicyclists



In addition to tracking progress toward the San Francisco Safe Routes to School program's two overarching goals, looking for signs of change at the school level helps to further contextualize the true impact of the program. Key signs that schools are thinking differently about transportation options include changing pick-up or drop-off procedures, self-organizing events that feature the Four Fun Ways, and establishing permanent Safe Routes to School-related programs, clubs, or committees.

Based on school administrator survey feedback from the 2023–2024 school year, it was found that:

47.8% of schools have established policies related to drop-off or pick-up (congestion plans)

20.0% of schools report having at least two self-organized events during the school year

8.7% of schools have a permanent SF Safe Routes to School program, club, or committee

This data provides a baseline for comparison over the coming years to see how the prevalence of policies and practices that support the Four Fun Ways changes over time in SFUSD schools.



IX. Looking Ahead to 2024–2025

Over the course of the 2023–2024 school year, the San Francisco Safe Routes to School team learned many lessons on how to improve the program and the evaluation process for the upcoming school year. Feedback directly from school communities, including school administrators, parents, teachers, and young people themselves, via conversations and surveys has been especially valuable. The team is dedicated to continuously improving and evolving the San Francisco Safe Routes to School program and looks forward to empowering even more students and community members to engage in active, fun, and safe travel next year.



Top 5 Lessons Learned from 2023–2024

Lesson 1

Communicate Earlier and More Often

Ongoing communication helps schools feel connected and informed about the San Francisco Safe Routes to School program and upcoming events in the area. Though community outreach and engagement efforts were strong this year, there may be some room for improvement in communications and support related to annual events. Most San Francisco Safe Routes to School annual citywide events feature opportunities for parents, teachers, and community members to become Champions who take the lead to plan biking, rolling, and walking events for their respective schools. Any delays or gaps in communication between the San Francisco Safe Routes to School team and event Champions may hinder the potential impact and reach of these events.

In the recent Bike & Roll Champions Survey, **“better communication and organization”**—which appeared in **30.8% of responses**—emerged as the number one area for improvement. Champions emphasized the need for more advanced notice, clearer instructions, more access to support, and more publicity for events. In the upcoming school year, the program will strive to communicate earlier and more consistently in relation to flagship annual events to ensure all community members and event Champions feel informed and supported.

Lesson 2

Explore and Strengthen Community Partnerships

One of the most remarkable aspects of the San Francisco Safe Routes to School program is its alignment with a range of important social issues that impact the San Francisco community, including environmental sustainability, public health and wellness, safe streets, and transportation access. This broad overlap opens numerous opportunities for partnerships with existing organizations and initiatives to amplify the program's reach and create collective impact.

A notable example of this type of partnership was the **new collaboration between San Francisco Safe Routes to School and SFUSD SNS for National School Breakfast Week**. Healthy eating and the physical exercise that comes from active forms of transportation go hand-in-hand as parts of a healthy lifestyle. Looking ahead, San Francisco Safe Routes to School should explore further partnership opportunities with initiatives across San Francisco to expand the program's reach and impact for students and communities across the city.

Lesson 3

Continue to Leverage Local Champions

Champions are community members who are fierce proponents of the Four Fun Ways and work in partnership with the San Francisco Safe Routes to School program team to implement events and activities in local schools. Champions extend the capacity of the San Francisco Safe Routes to School team, act as a bridge between the program and school communities, and are **critical to increasing the program's reach across the city**. This model has proven to be a success over the past few years, and San Francisco Safe Routes to School should continue to deepen and expand collaborations with local Champions within SFUSD, particularly in Focus Schools. Additionally, as the Bike P.E. collaboration with Champion Brian Lau at Roosevelt Middle School demonstrates, identifying and working in close partnership with Champions to develop customized programs for schools is an interesting avenue for further exploration.



IX. Looking Ahead to 2024–2025

Lesson 4

Embrace Technology but Keep It Simple

An important development on the operational side of the San Francisco Safe Routes to School program this year was the introduction of a new customized data management system using AirTable. Implementing this system required significant effort to train the program team and ensure consistent use. Using the new system to record participant information during events and activities was especially challenging. Initially, event sign-in forms were overly long and complex, which led to usability challenges. To address this, the forms were simplified, and a printable version was created for events where internet access was not available on-site.

This example highlights the need to ensure that technological solutions are tailored to the specific needs of the program team and the practical realities on the ground. While technology can greatly enhance program efficiency and data management, it must be implemented in a way that is user friendly and adaptable to varying circumstances to truly be effective. As the program continues to implement AirTable and other new technologies, this is an important lesson to keep in mind.



Lesson 5

Strengthen Evaluation and Data Collection Efforts

This year also marked the introduction of a new evaluation framework and related data collection tools, including the School Administrator Survey and the Bike & Roll Champions Survey, for the San Francisco Safe Routes to School program. While response rates and participation in these surveys fell below the desired levels, the valuable data they generated demonstrates the importance of continuing to invest in focused approaches to gathering community feedback. A key lesson for next year is to provide more time for stakeholders to engage in data collection efforts and to increase the level of marketing and communication about these efforts to encourage greater participation.

With these best practices in mind, in the upcoming school year, San Francisco Safe Routes to School will continue to improve and strengthen data collection efforts with an eye toward engaging even more stakeholders, including students, families, and school staff. In addition to the surveys implemented this year, additional focus groups and surveys will be introduced. By collecting more comprehensive feedback from a broader range of stakeholders, the San Francisco Safe Routes to School program will be better equipped to assess impact, identify areas for improvement, and enhance overall program effectiveness.

Coming Up in 2024–2025

There are some exciting developments coming to the San Francisco Safe Routes to School program in the 2024–2025 school year, including the biannual School Travel Tally and a redefinition of the program’s Focus Schools.

» Travel Tallies

The next School Travel Tally is coming up in fall 2024! Every two years, San Francisco Safe Routes to School works in close partnership with classrooms across San Francisco to conduct a School Travel Tally. A cornerstone of Safe Routes to School program evaluations throughout the nation, the School Travel Tally is the primary data collection tool used to understand what modes of transportation students use to travel to and from school. Adding to the traditional tally model, the upcoming San Francisco Safe Routes to School tally will also collect valuable information on teachers’ modes of travel.

» Redefining the Focus Schools

San Francisco Safe Routes to School is deeply committed to advancing equity and dismantling long-standing inequities. In 2019, the program codified this commitment by using a data-driven approach to prioritize schools in under-resourced neighborhoods, defining a set of Focus Schools that would receive dedicated attention and support. Since the time the original set of Focus Schools were identified, significant changes have occurred both in the city of San Francisco and globally. The COVID-19 pandemic altered where people live, their school preferences, and their travel choices. Additionally, the student population is changing dramatically; kindergarteners from the 2019–2020 school year will transition to middle school in the 2024–2025 school year, representing a complete turnover of the student population.

As a result of these changes, some schools that previously required focused support may no longer need it, while others have developed new needs and opportunities for impactful engagement. The program plans to share an updated strategy and list of Focus Schools to ensure that the San Francisco Safe Routes to School program remains responsive and effective in addressing current needs and opportunities during the 2025–2026 school year.

With the 2024–2025 school year on the horizon, San Francisco Safe Routes to School is dedicated to continuing to enhance children’s health and well-being by integrating active transportation into their daily routines, prioritizing equity and safety above all else. Building on the momentum from the past year, the program is poised to create even greater impacts for youth and families in SFUSD and throughout the city next year.

Thank you for your continued support and engagement!

Get Involved

with San Francisco Safe Routes to School

To learn more about the San Francisco Safe Routes to School program or to get involved, please subscribe to the newsletter to receive regular updates on upcoming events and activities across the city!

To Subscribe:



The San Francisco Safe Routes to School Program

would not be possible without the dedication and commitment of the city agencies and contractors who make up the program team.



1. Mackey Cabada, M. (2023, October 5). Walk & Roll to School Week celebrates people-powered transportation. Walk San Francisco. <https://walksf.org/2023/10/05/walk-roll-to-school-week-celebrates-people-powered-transportation-photos/>
2. SFMTA. (n.d.). Why replace the Potrero Yard? Why Replace the Potrero Yard? | SFMTA
3. U.S. Census Bureau. (2022). Language spoken at home: American Community Survey, ACS 1-Year Estimates Subject Tables, Table S1601. <https://data.census.gov/table/ACSST1Y2022.S1601?q=foreign%20language&q=160XX00US0667000>
4. This figure includes a weighted average of participating schools. Due to data limitations, imputation was required for 2022–2023 for total enrollment data, which was used throughout as the weight for averaging each school’s percentage commuting by single-family vehicle. Imputation was done by averaging total enrollment data for select schools for all years prior.
5. Moran, M. (2022, April 19). How people traveled through San Francisco in 2021. SFMTA. <https://www.sfmta.com/blog/how-people-traveled-through-san-francisco-2021-0>
6. SFMTA. (2024, August 1). Muni ridership: average weekday ridership [Dashboard]. <https://www.sfmta.com/reports/muni-ridership-average-weekday-ridership>
7. Top schools were determined by averaging a.m. and p.m. travel tally counts from the 2022–2023 school year. Schools with fewer than 10 students tallied or with less than 50% student participation were excluded from analysis avoid selecting artificially high percentages.
8. School-related collisions are defined as accidents that involve pedestrians or bicyclists aged 5–18 and occur during the school year (August–May), on a weekday between 6 a.m. and 6 p.m., within one-quarter mile in any direction of at least one school.
9. Johns, T. (2023, August 22). Changes coming to San Francisco intersection where 4-year-old girl was hit, killed. ABC7 News. <https://abc7news.com/san-francisco-4-year-old-killed-sf-traffic-death-pedestrian-4th-and-king/13682843/>

SF- SAFE ROUTES
TO SCHOOL





**San Francisco
County Transportation
Authority**

The San Francisco Safe Routes to School Program is supported by the San Francisco County Transportation Authority through a grant of Proposition L transportation sales tax funds.

